

Feedback Presentation

WCPSS ENROLLMENT PLAN, 2019-20

A MULTI-YEAR APPROACH TO GROWTH MANAGEMENT

Prepared by: Office of Student Assignment

Board of Education Work Session
October 16, 2018

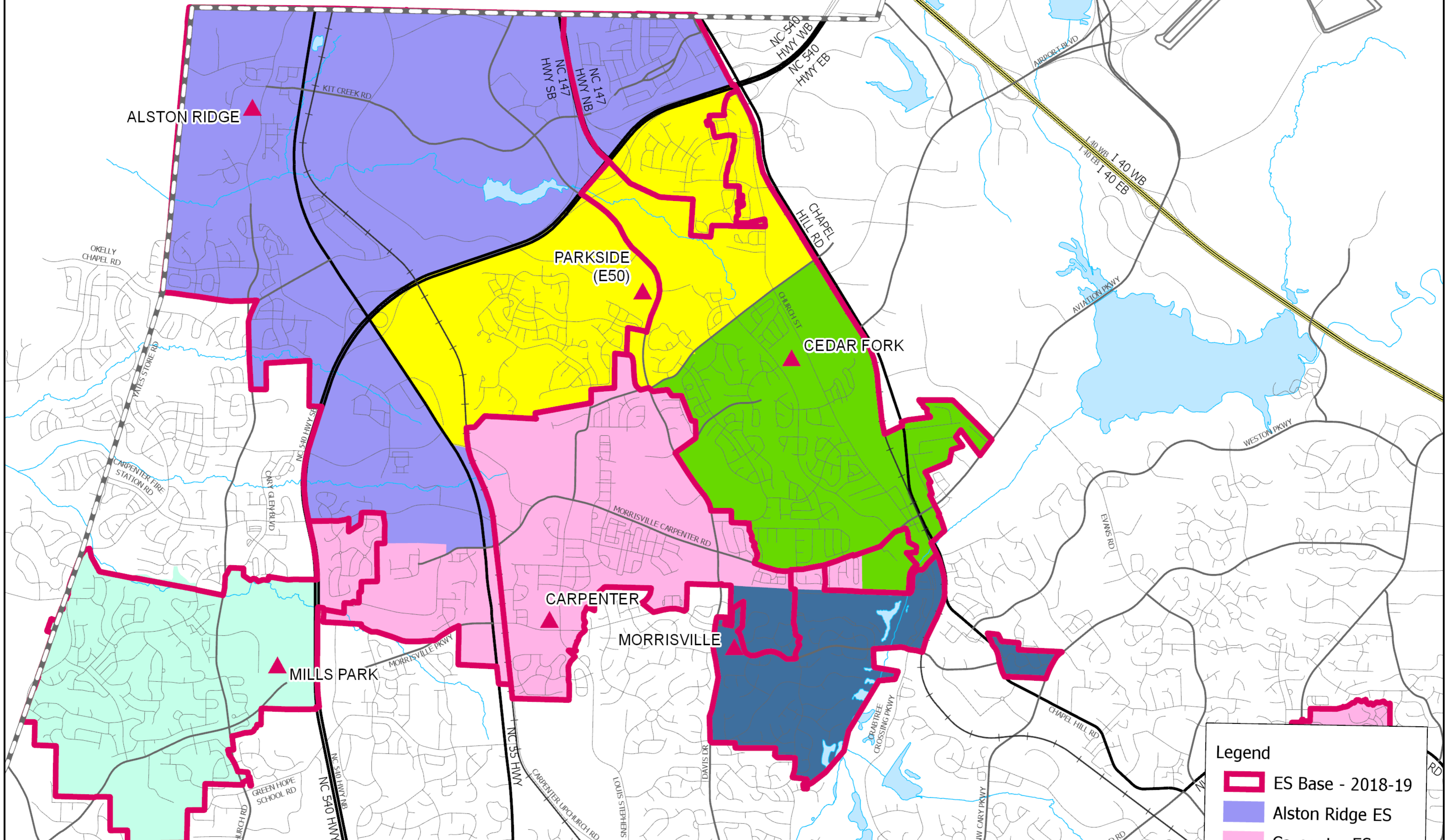
Items for discussion

- Parkside Elementary
- Green Hope Elementary
- Alston Ridge Middle
- East Cary Middle
- Calendar Application Areas
- Grandfathering Rules
- Green Level High
- Southeast Raleigh Elementary

Parkside Elementary

District Goals:

- To provide relief to overcrowded/capped schools in the area
- To provide a proximate elementary school. Proximate is defined as a nearby school but not necessarily the closest.



ALSTON RIDGE ▲

PARKSIDE
(E50) ▲




CEDAR FORK ▲

CARPENTER ▲

MORRISVILLE

MILLS PARK ▲

Legend

-  ES Base - 2018-19
-  Alston Ridge ES
-  Carpenter ES

Parkside Elementary Traditional Calendar vs Year-Round Calendar

Traditional Calendar

- Capacity- 636
- Crowding Percentage- 148%*

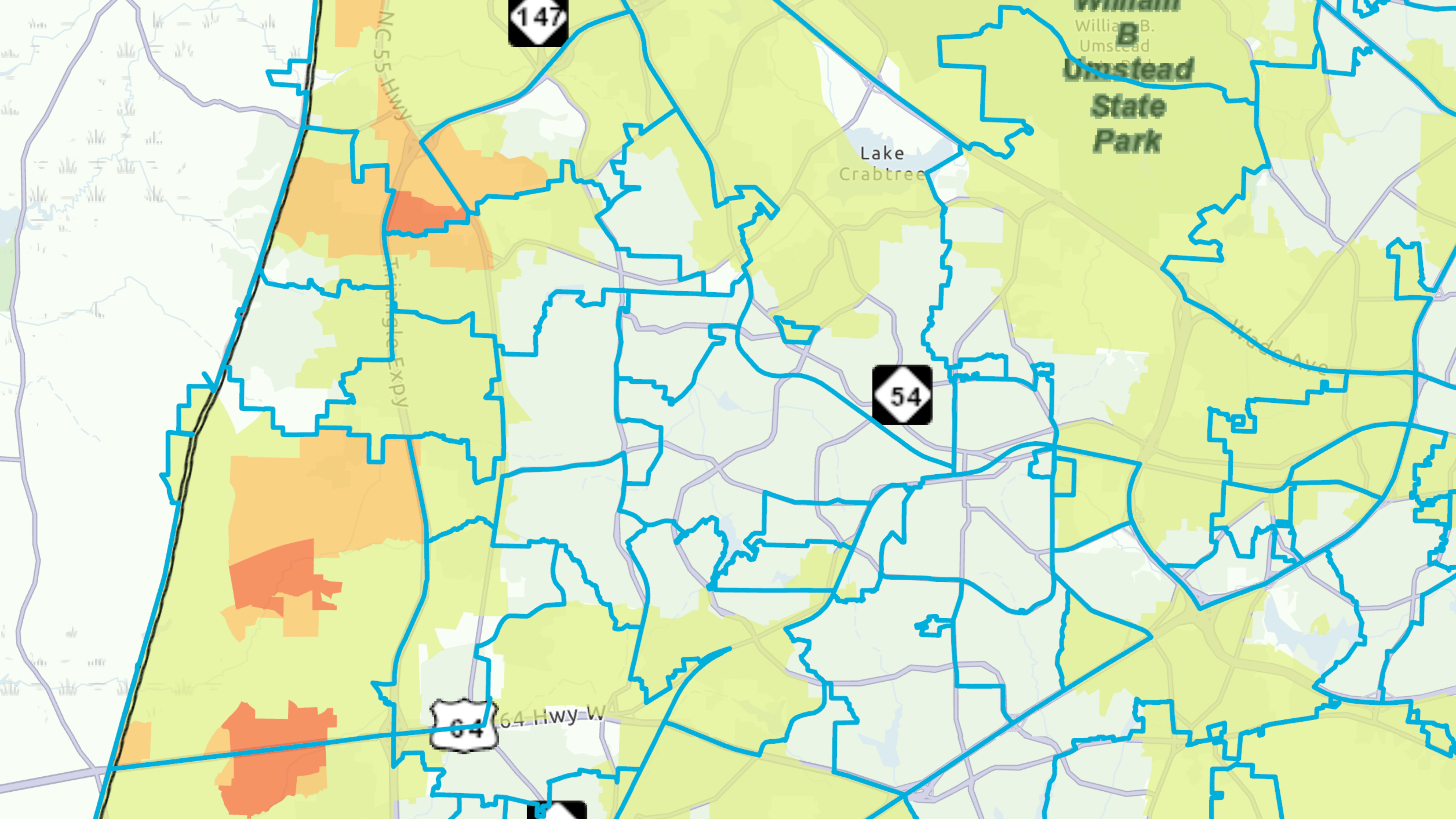
Year-Round Calendar

- Capacity- 834
- Crowding Percentage- 93%*

Assigning students to new schools includes Base AND Calendar Application students.

Differences in crowding is due to a larger number of students currently attending their Calendar Application School for traditional calendar as opposed to year-round

* Represents crowding projections from Draft 1 slide



147

William B.
Umstead
State
Park

Lake
Crabtree

NC 55 HWY
Triangle Expy

Wade Ave

54

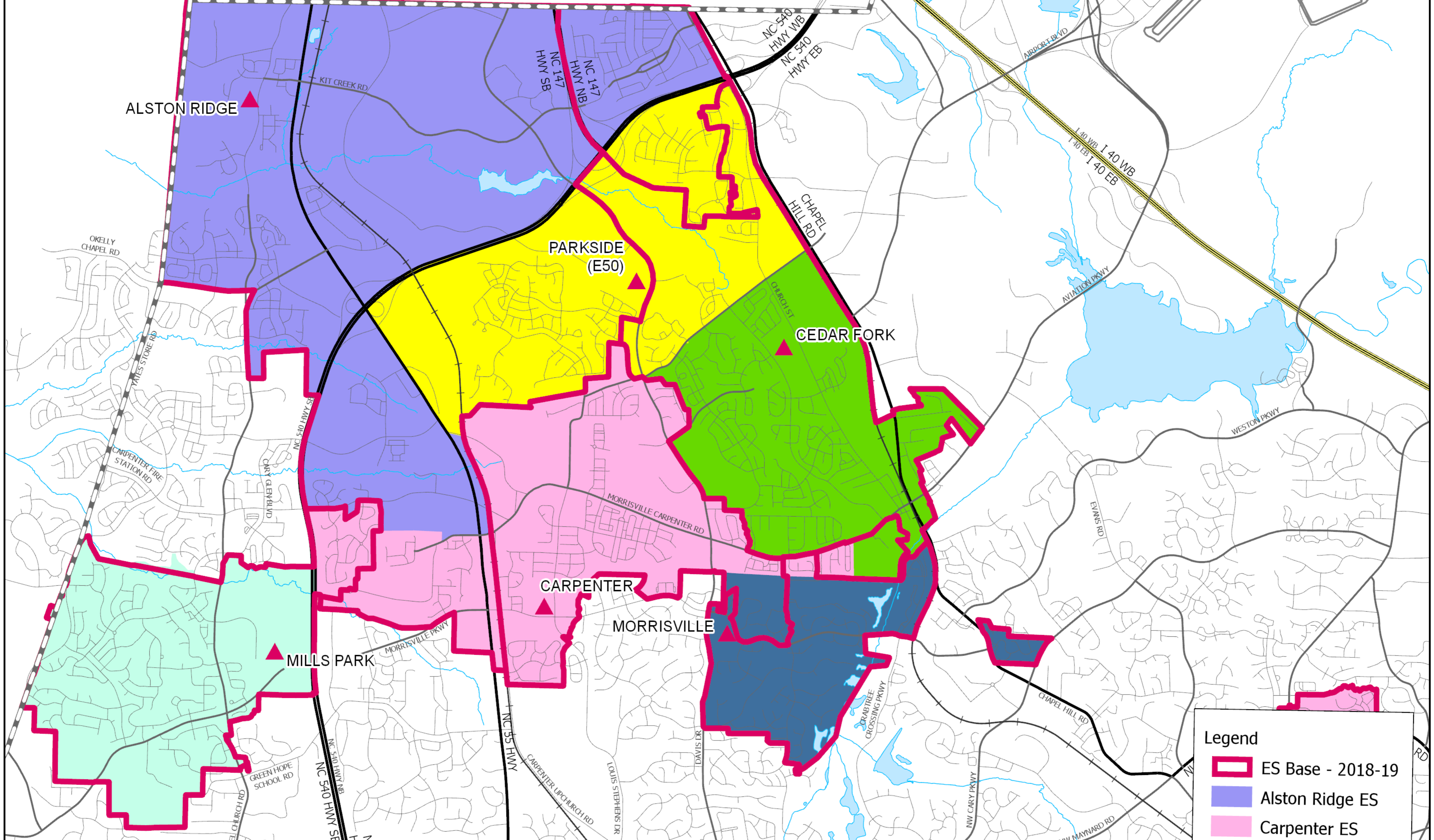
64 Hwy W

64

Parkside Elementary Traditional Calendar vs Year-Round

Open on Traditional Calendar

- **Option 1:** Reassign additional students from many schools to reduce projected crowding at Parkside (148%)
- **Option 2:** Divide proposed base attendance area for Parkside into two sections – one section attends Parkside, one section assigned as a satellite area further east or north
- **Option 3:** Open Parkside at 148% (Not feasible due to K-3 class size legislation)



ALSTON RIDGE ▲

PARKSIDE (E50) ▲

CEDAR FORK ▲

CARPENTER ▲

MILLS PARK ▲

MORRISVILLE

Legend

- ES Base - 2018-19
- Alston Ridge ES
- Carpenter ES

Parkside Elementary- Traditional Calendar vs Year-Round

Open on Year-Round Calendar

- **Option 4:** Move forward with the current recommendation from staff

Parkside Elementary- Calendar Application School

If still planning to open on the Year-Round calendar, parents want us to consider proximity of traditional calendar application school

Powell Elementary

- Provides magnet curriculum not offered at base school
- Ligon Middle/Enloe High pathway
- Longer bus ride

Pleasant Grove Elementary

- More proximate Calendar Application School than Powell Elementary
- No district transportation

Parkside Elementary- Calendar Application School

Pleasant Grove Elementary (with district transportation)

- More proximate Calendar Application School than Powell Elementary
- Shorter bus ride*

*Assumption made due to mileage

Parkside Elementary - Calendar Application Schools

- **Option 1:** Powell Elementary with bus transportation
- **Option 2:** Powell Elementary with bus transportation AND Pleasant Grove Elementary without bus transportation
- **Option 3:** Pleasant Grove Elementary with bus transportation
- **Option 4:** More proximate application school, but not seat any applications until the crowding at that school is reduced

Cameron Pond

Currently assigned to Mills Park Elementary and Mills Park Middle School

- Both schools are on the traditional calendar
- Proposed Greenway to connect the neighborhood to the park that also connects to the school campus
- Both schools have enrollment caps
- Mills Park Middle will be provided some relief with the opening of Alston Ridge Middle
- No additional relief to Mills Park Elementary in current proposal
- Base attending Base Percentage: 90%

Cameron Pond

Proposed to be assigned to Carpenter Elementary and Alston Ridge Middle School

- Both schools are on the year-round calendar
- Not as proximate to Mills Park campus
- Separated from Mills Park campus by NC 540
- Carpenter Elementary currently has an enrollment cap
- Current proposal reduces the crowding at Carpenter Elementary and fills the new middle school
- Base attend Base Percentage: 60% (Carpenter only)

K-3 Class Size Legislation

- Full mandate in 2021-22
- Phasing in class size reductions begins in 2019-20
- Already converted more than 80 offices, storage rooms and conference spaces to create classroom space
- Ultimately will need more than 400 additional classrooms districtwide

K-3 Legislation Concerns

State mandate of K = 18 per class, 1st = 16, 2nd = 17 and 3rd = 17

K-3 class size legislation example:

Mills Park Elementary: Current K-5 enrollment * = 896 students

Grade K (**133**) = 7 classes @ 20 students per class current (8 classes would be needed)

1st Grade (**129**) = 7 classes current (9 classes would be needed)

2nd Grade (**153**) = 8 classes current (9 classes would be needed)

3rd Grade (**153**) = 8 classes current (9 classes would be needed)

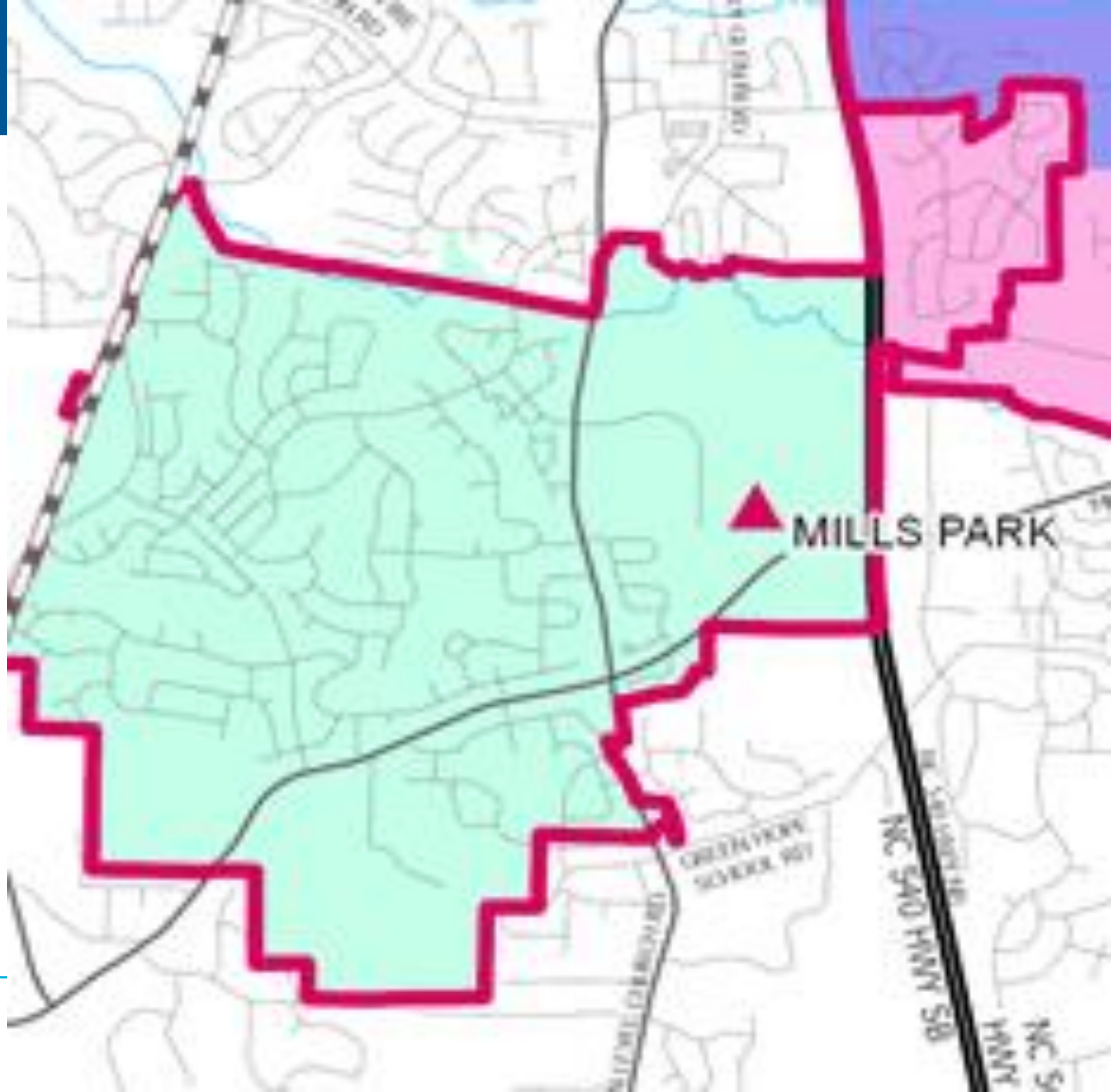
4th Grade (**161**) = 6 classes @ 28 students per class current (no restriction)

5th Grade (**167**) = 6 classes @ 28 students per class current (no restriction)

Legislation will require and additional 5 extra classes for this school if implemented today

* Does not include Pre-K

Mills Park Elementary

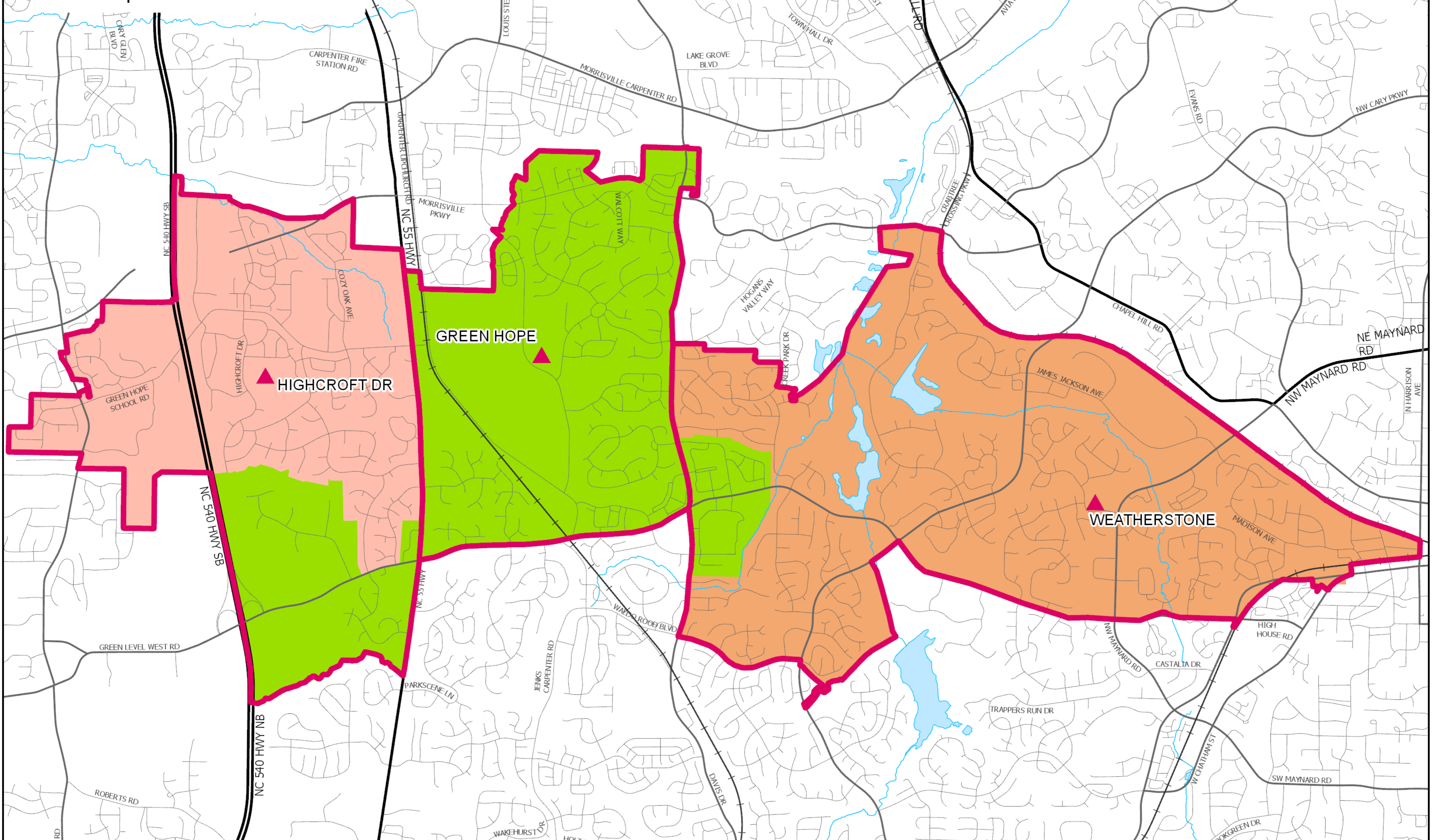


Cameron Pond

- **Option 1:** Move forward with the current recommendation from staff
(provides relief to Mills Park ES and MS, but assigns the neighborhood to schools not as proximate)
- **Option 2:** Allow for Cameron Pond to remain at Mills Park Elementary and Mills Park Middle
(does not provide relief to Mills Park ES and MS. Concerns grow over K-3 at the elementary about how to accommodate all of the assigned students)
- **Option 3:** Allow for Cameron Pond to remain at Mills Park Elementary and Mills Park Middle AND reassign a different portion of the Mills Park Elementary/Middle base to relieve current crowding
(would need to be an existing neighborhood to accommodate K-3 concerns. Adding new families this late in the process does not allow time for feedback)
- **Option 4:** Revise Grandfathering rules to allow more students to remain
(lessens impact on K-3 and crowding relief. Grandfathering rules not uniform across the district)

Green Hope Elementary

- Green Hope Elementary requires Calendar Applications to maximize the building's capacity
- Neighboring schools (Highcroft Elementary and Weatherstone Elementary) have crowding concerns with regards to the K-3 class size legislation



HIGHCROFT DR

GREEN HOPE

WEATHERSTONE

Green Hope Elementary

- Adding to the base of Green Hope Elementary (and Davis Drive Middle) will create more calendar application seats at West Cary Middle and provide additional crowding relief to Mills Park Middle, which has an enrollment cap.
- The high school assignment has been proposed to change to Green Level High for the Highcroft area.
- No high school change is proposed for the Weatherstone area as it relates to this move.

Green Hope Elementary - Parent Feedback

- Green Hope Elementary is overcrowded
- Students coming from Highcroft Elementary will not have a cohort of other students moving to Green Level High
- Moving students into Green Hope Elementary and Davis Drive Middle from Weatherstone is East to West, instead of West to East like many other proposals

Green Hope Elementary

- **Option 1**- Remove this proposal

(Highcroft Elementary, Weatherstone Elementary and Mills Park Middle will receive no additional crowding relief for K-3 concerns)

- **Option 2**- Increase the area assigned to Davis Drive Middle

(will increase the cohort assigned to Green Level High over time, but will also possibly bring new families into the discussion at such a late time)

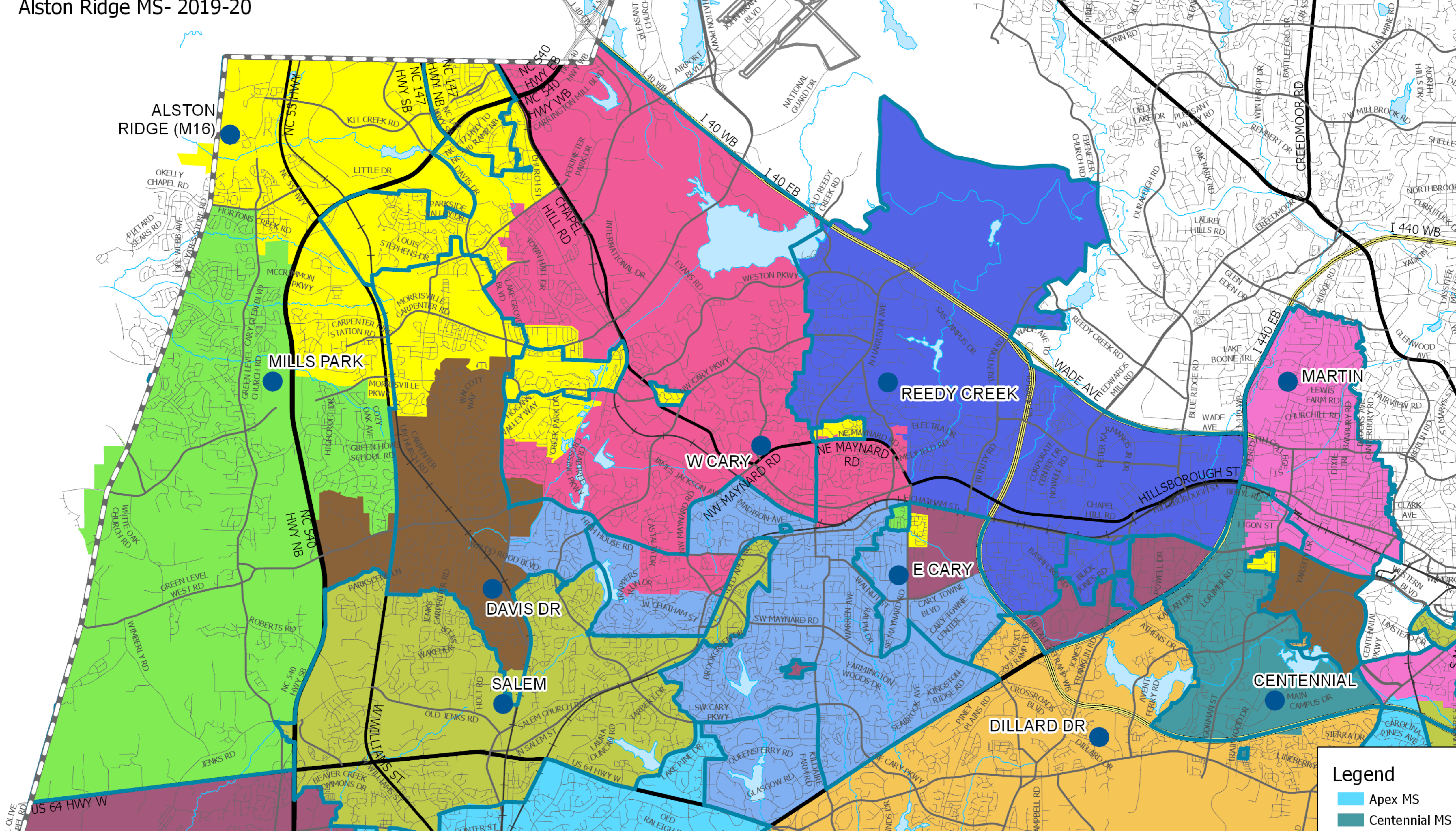
- **Option 3**- Keep the recommendation from staff

(see previous slide for parent concerns)

Alston Ridge Middle

District Goals:

- To provide relief to overcrowded/capped schools in the area
- To provide K-8 calendar alignment



Legend

- Apex MS
- Centennial MS

Alston Ridge Middle Traditional Calendar vs Year-Round Calendar

Traditional Calendar

- Capacity- 1288
- Crowding Percentage- 111%*

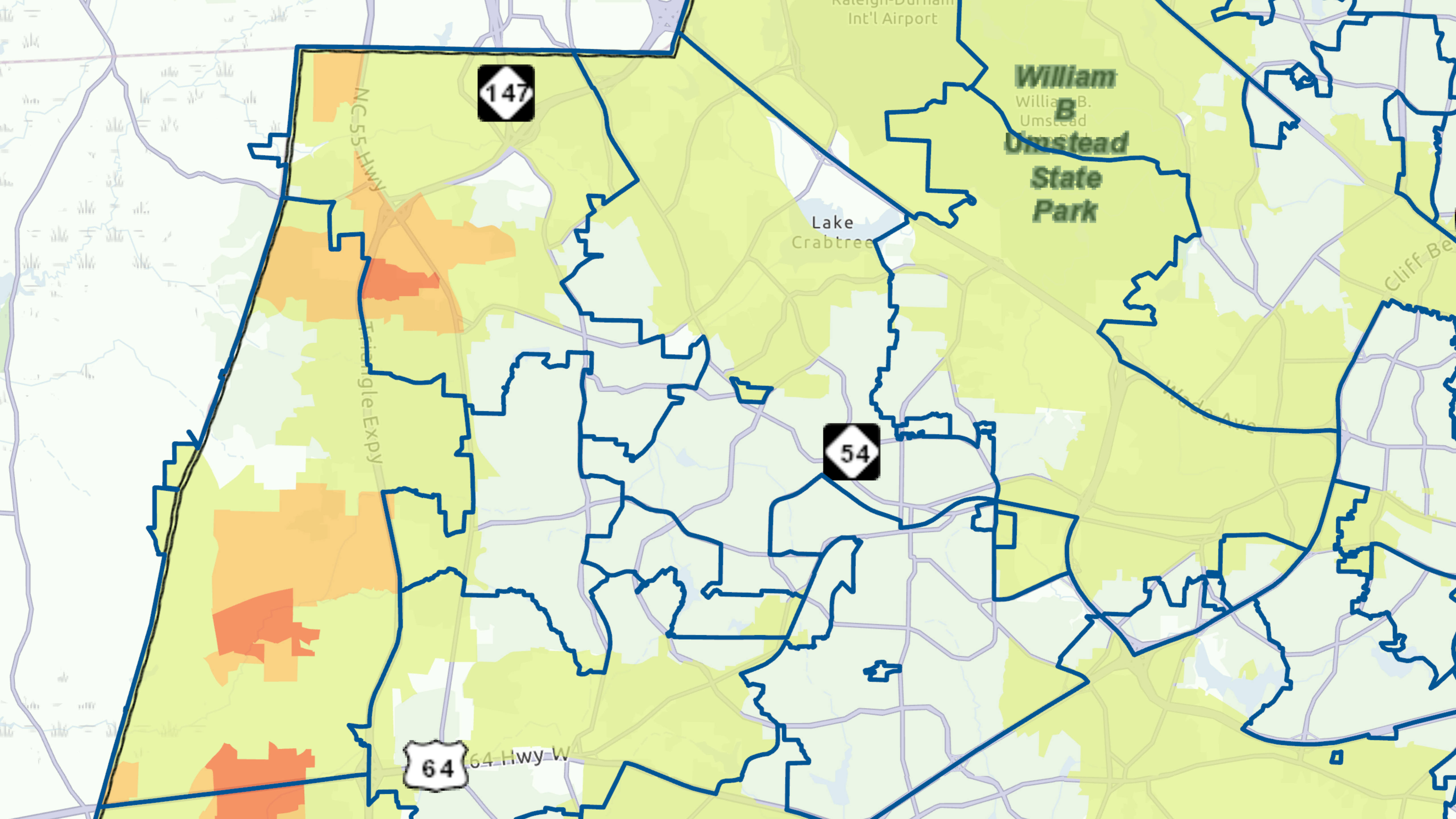
Year-Round Calendar

- Capacity- 1600
- Crowding Percentage- 90%*

Assigning students to new schools includes Base AND Calendar Application students.

Differences in crowding is due to a larger number of students currently attending their Calendar Application School for traditional calendar as opposed to year-round

* Represents crowding projections from Draft 1 slide



147

54

64 Hwy W

William
B.
Umstead
State
Park

Lake
Crabtree

Triangle Expy

NC 55 Hwy

Cliff Be

Wade Ave

Raleigh-Durham
Int'l Airport

Alston Ridge Middle Traditional Calendar vs Year-Round

Open on Traditional Calendar

- **Option 1:** Will need additional NEW reassignments to reduce the projected crowding percentage (111%); increase the number of impacted base attendance areas/number of students who would need to change schools

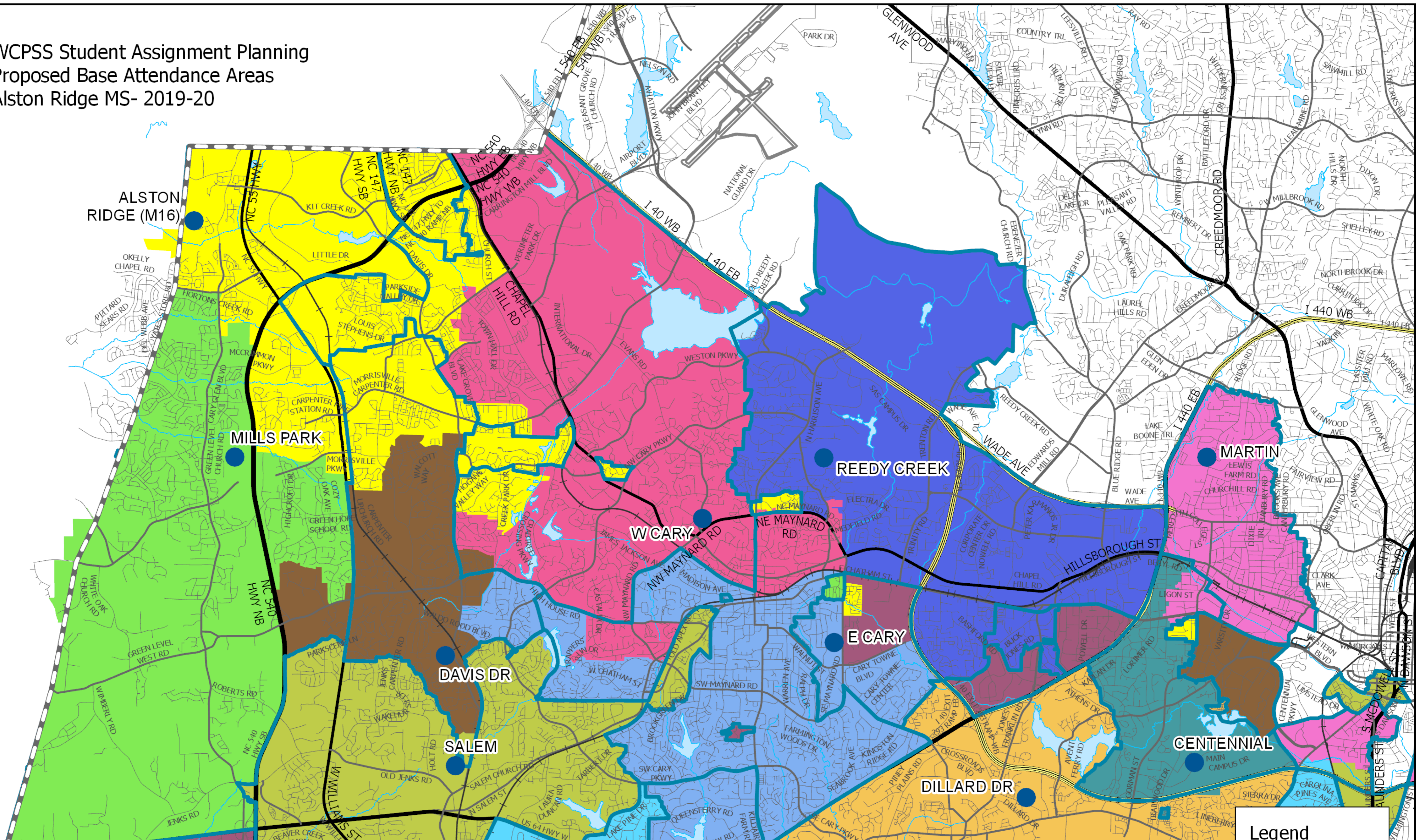
(Adding new families this late in the process does not allow for time for feedback)

Open on Year-Round Calendar

- **Option 2:** Move forward with the current recommendation from staff

(provides K-8 calendar alignment and reduces crowding at overcrowded/capped schools)

WCPSS Student Assignment Planning
Proposed Base Attendance Areas
Alston Ridge MS- 2019-20



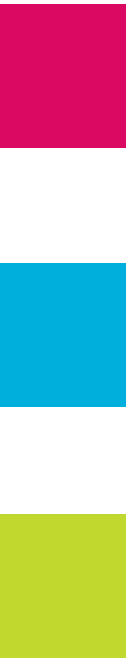
Alston Ridge Middle- Calendar Application School

If still planning to open on the Year-Round calendar, some feedback discussed the proximity of the current proposed school

Alston Ridge Middle- Calendar Application School

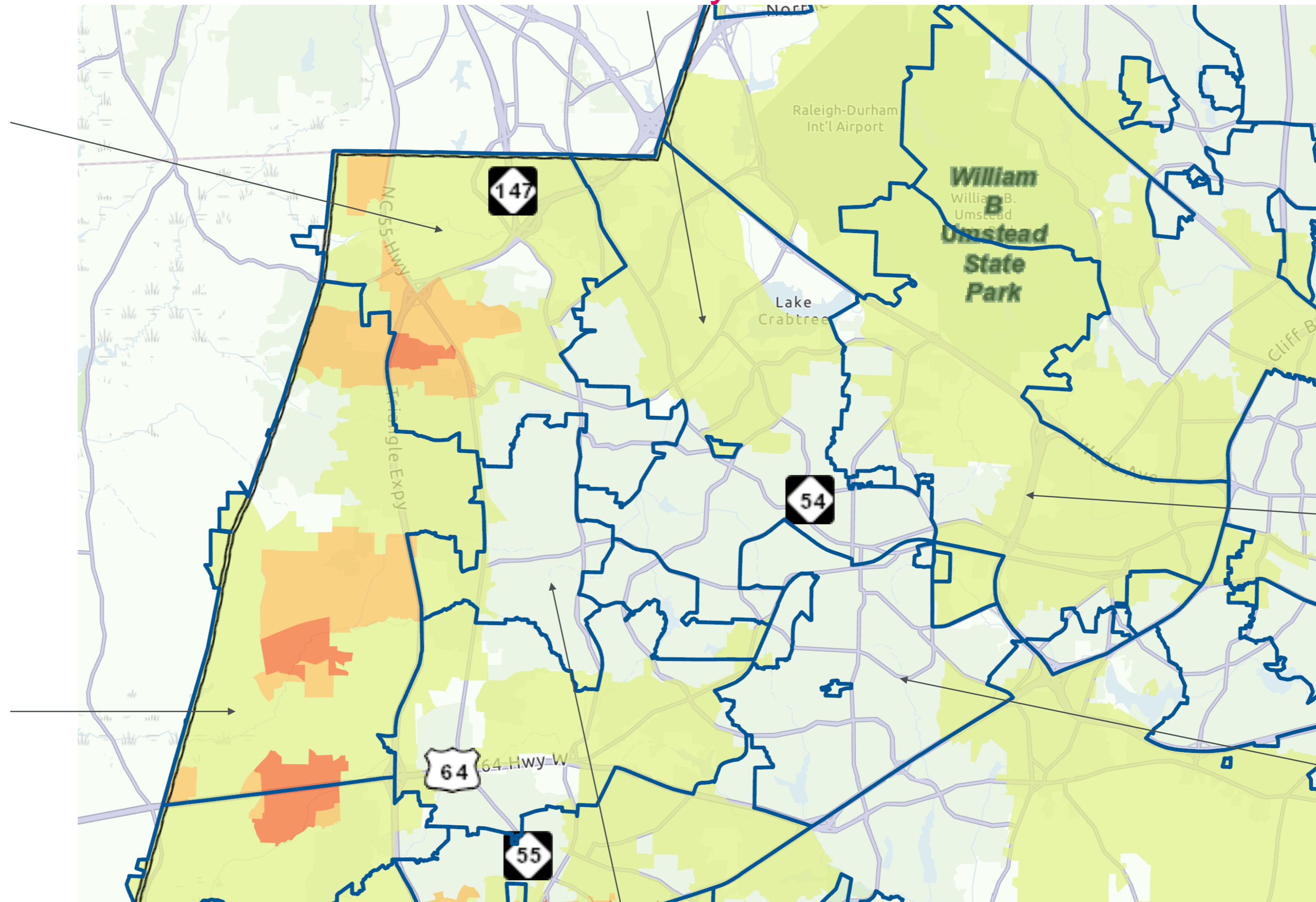
- **Option 1: West Cary Middle** (current recommendation from staff)
(provides most proximate school with some available seats)
- **Option 2: East Cary Middle**
(Not as proximate as West Cary Middle but would have more available seats for calendar applications)
- **Option 3: Mills Park Middle, but not seat any applications until the crowding at that school is reduced**
(Most proximate but would not receive any calendar application students in the near future until crowding concerns diminish)

Middle School Crowding Concerns



Alston Ridge MS

West Cary MS



Mills Park MS

Reedy Creek MS

East Cary MS

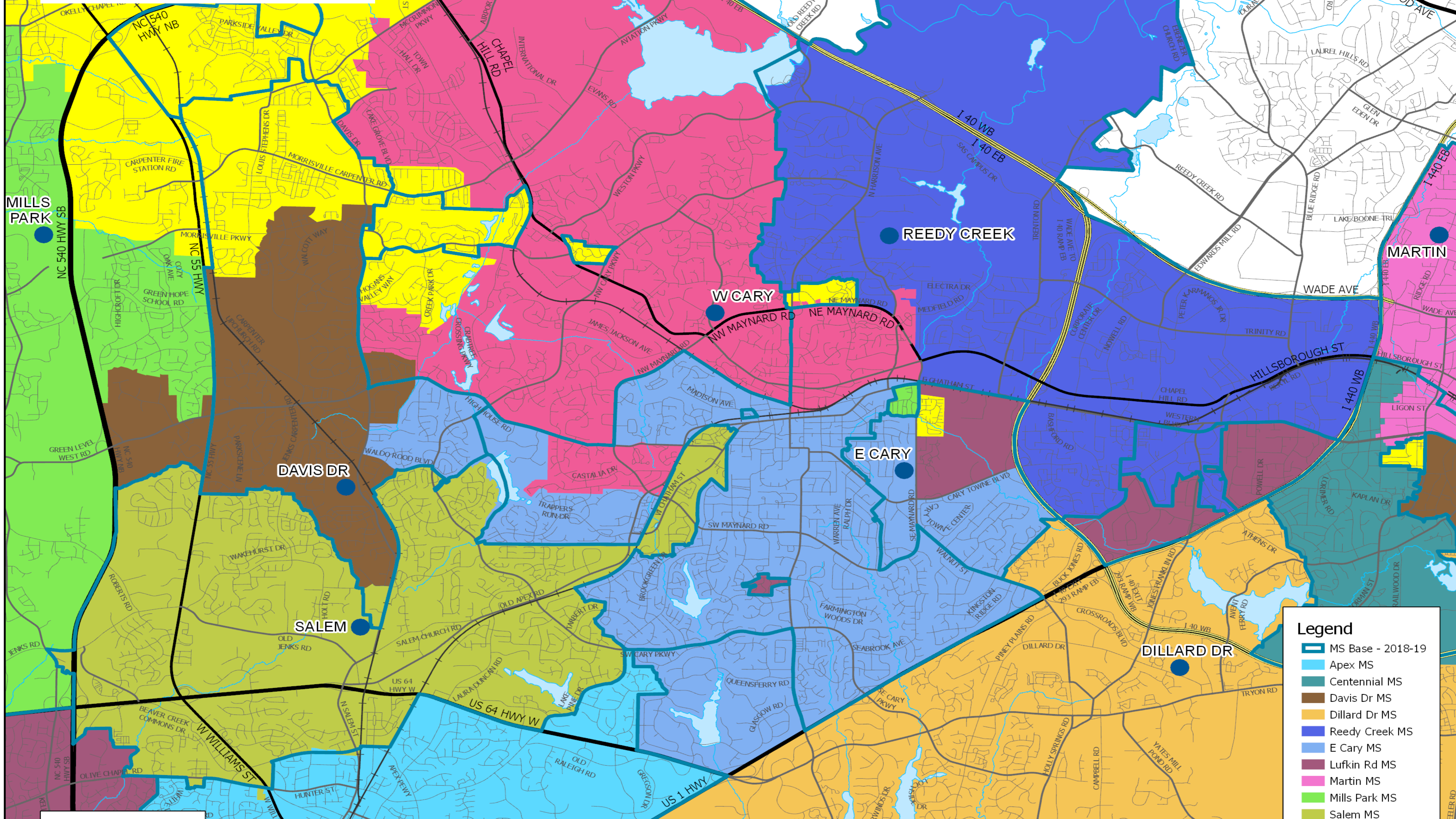
Davis Drive MS

East Cary Middle

- A large portion of East Cary Middle's base is proposed to be assigned to the more proximate Alston Ridge Middle (Kitts Creek/Providence Place areas)
- Reedy Creek Middle has an enrollment cap
- Schools feeding to East Cary Middle after the opening of Alston Ridge Middle: Adams ES (YR), Cary ES (T) and Dillard Drive ES (T)

East Cary Middle

- Areas most proximate to East Cary Middle are currently assigned to Reedy Creek Middle
- Areas proposed to attend East Cary Middle from Davis Drive Middle were included to help meet the Operational Efficiency and Student Achievement Pillars



Legend

- MS Base - 2018-19
- Apex MS
- Centennial MS
- Davis Dr MS
- Dillard Dr MS
- Reedy Creek MS
- E Cary MS
- Lufkin Rd MS
- Martin MS
- Mills Park MS
- Salem MS
- West Cary MS

Map generated for WCPSS by Numerix LLC
Intended for planning purposes only

Feedback Associated with East Cary Middle

- Davis Drive Middle families prefer to remain at the more proximate school (suggestions of other methods to address utilization concerns were proposed)
- Reedy Creek Middle families would like to remain, but have also proposed revising the Grandfathering rules. Feel as though too many students have been assigned out
- Adams Elementary families would like a more proximate year-round middle school

Davis Drive to East Cary Middle Feedback

- Too many students have been assigned out of Davis Drive Middle
- Consider some, not all, of the proposed areas assigned to East Cary Middle
- Use satellite areas from Western Wake to increase the base attendance area at East Cary Middle

Davis Drive to East Cary Middle

- **Option 1:** Add additional areas from Mills Park Middle (Green Level West south to US 64) to Davis Drive Middle

(Would not immediately replace the students assigned out of Davis Drive Middle, but would provide a proximate option for these families. Bringing new families into the conversation later does not provide time for feedback.)

- **Option 2:** Consider allowing some but not all neighborhoods to return to Davis Drive Middle

(Would allow for some stability and maximize short term utilization, but would create fewer available seats long term.)

- **Option 3:** Use satellite areas from Mills Park Middle to increase the base area for East Cary Middle

(Not proximate, much longer bus ride and not efficient. Would allow for stability for current families.)

- **Option 4:** Keep the recommendation from staff

(See parent feedback for concerns.)

- **Option 5:** Revise the Grandfathering Rules

Reedy Creek to East Cary and West Cary Middle

- **Option 1:** Assign all students back to Reedy Creek from East Cary Middle
(East Cary Middle will continue to be under-utilized and no relief would be provided to Reedy Creek Middle. Would provide stability for families.)
- **Option 2:** Assign some but not all neighborhoods back to Reedy Creek
(Would provide stability for families, but would cause for less magnet seats to be available to support Western Wake crowding.)
- **Option 3:** Revise the Grandfathering rules
- **Option 4:** Keep the recommendation from staff
(See parent feedback for concerns.)

Adams Elementary Base and Application Areas

- **Option 1:** Change the calendar of Adams from year-round to traditional (Would affect a large number of new families very late in the process and would limit feedback.)
- **Option 2:** Keep the recommendation from staff

Proposed Calendar Application Area Changes

District Goals:

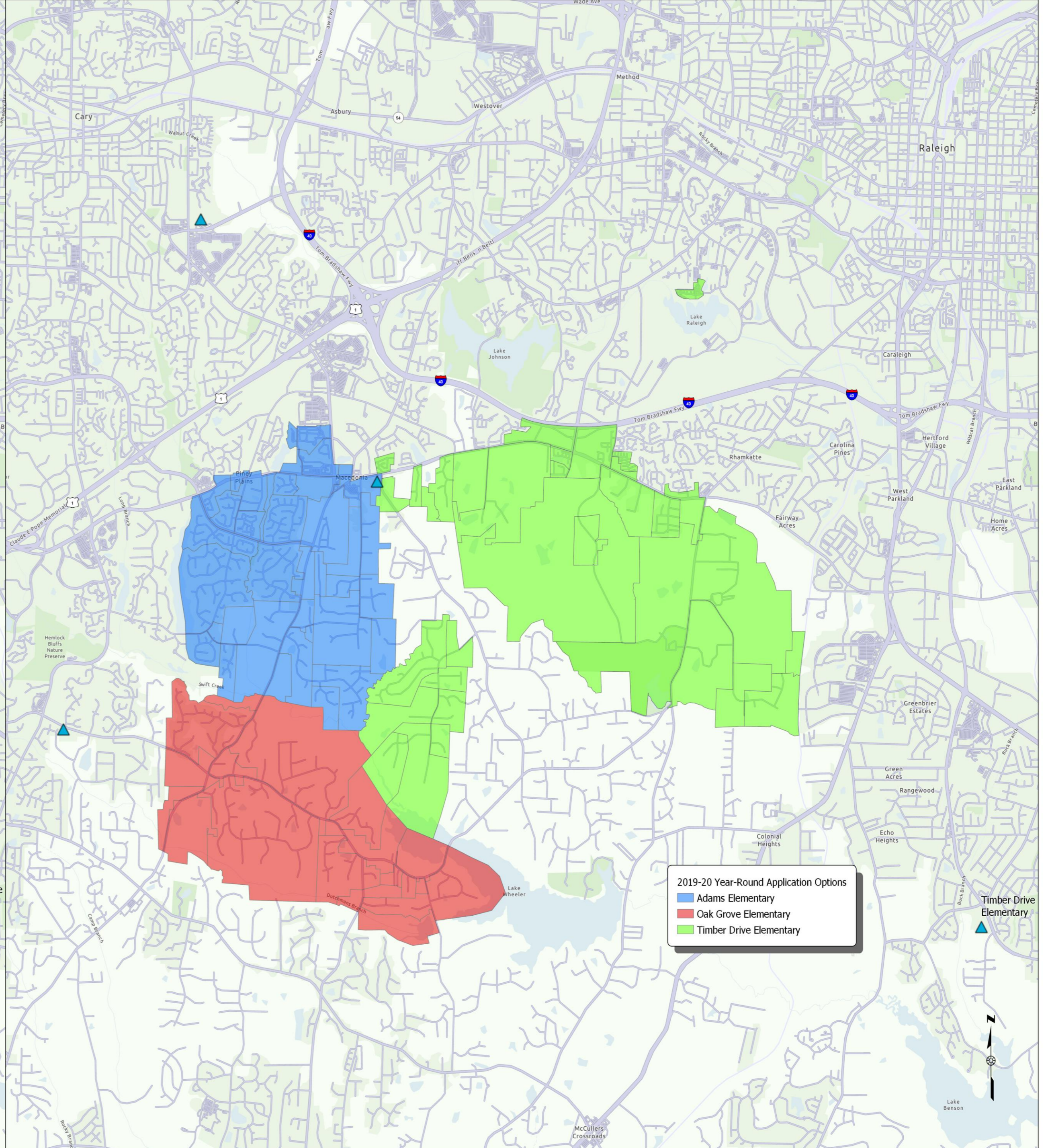
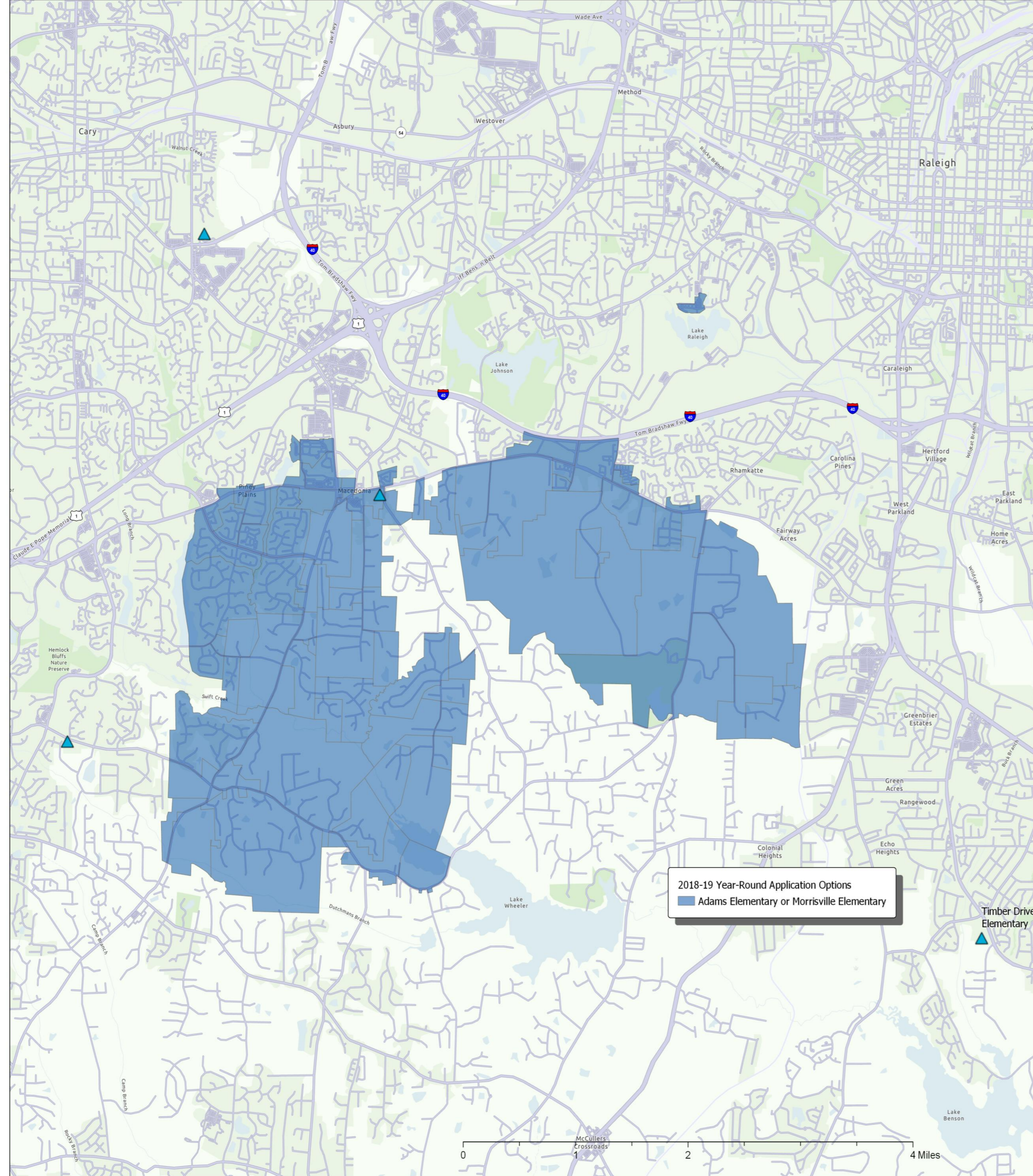
- Improve utilization of schools offered as an application school
- Increase the acceptance rate at application schools
- Maximize transportation efficiencies

Proposed Calendar Application Changes-Elementary

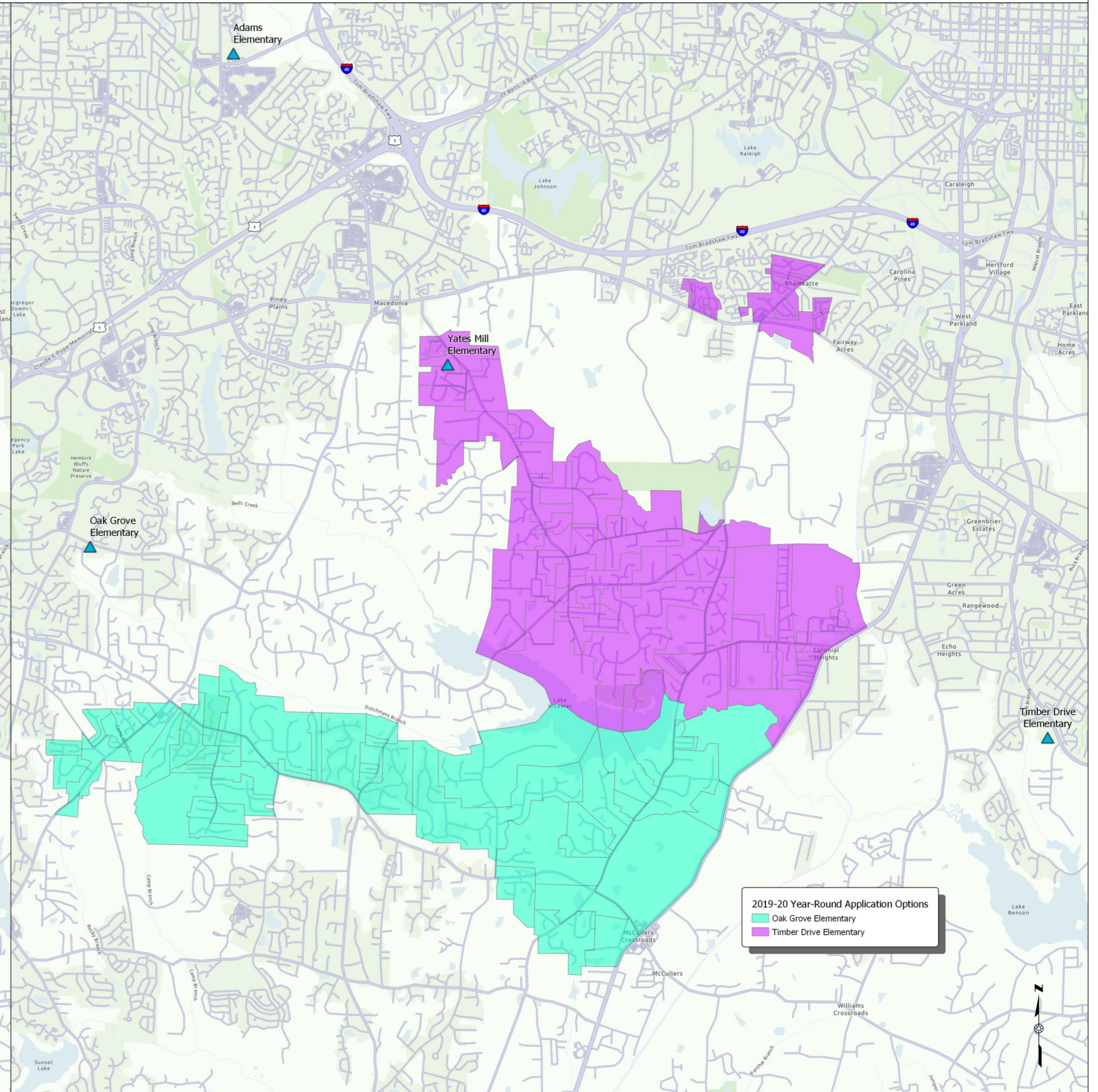
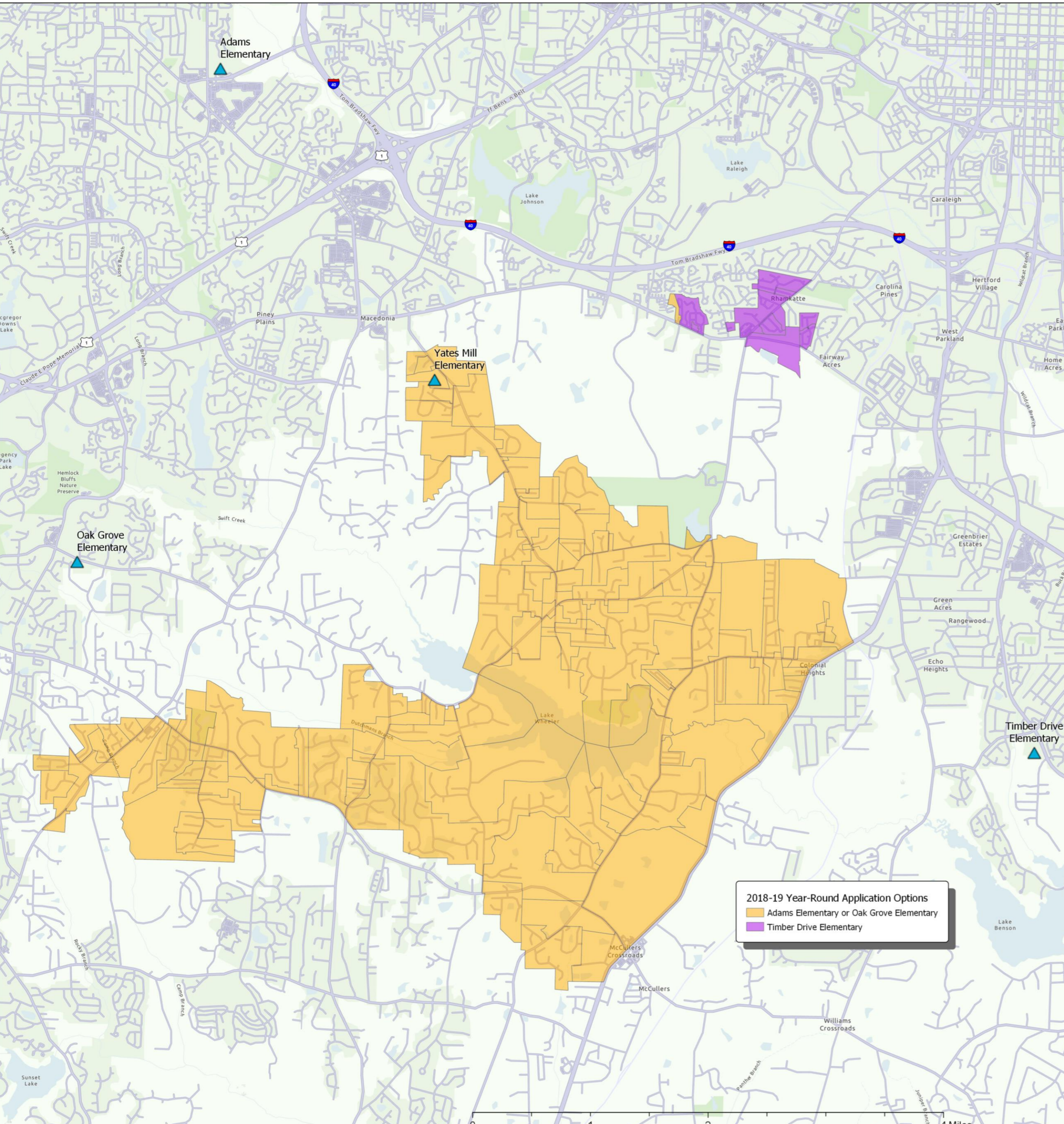
Base School	Application School	Application School	Application School	Application School
Adams ES	Reedy Creek ES	Swift Creek ES		
Apex ES	Laurel Park ES	Adams ES	Oak Grove ES	
Briarcliff ES	Adams ES	Morrisville ES		
Cary ES	Adams ES	Morrisville ES		
Cedar Fork ES	Morrisville ES	Carpenter ES		
^Davis Drive ES	Morrisville ES	Carpenter ES		Salem ES
^Green Hope ES	Carpenter ES			Turner Creek ES
Kingswood ES	Adams ES	Morrisville ES		
Northwoods ES	Morrisville ES	Adams ES		
Penny Road ES	Oak Grove ES	Adams ES		
Reedy Creek ES	Adams ES	Carpenter ES		
Swift Creek ES	Adams ES	Oak Grove ES*		Timber Drive ES*
Weatherstone ES	Morrisville ES	Adams ES		Salem ES
Yates Mill ES	Adams ES	Oak Grove ES*		Timber Drive ES*

Proposed Calendar Application Changes-Middle

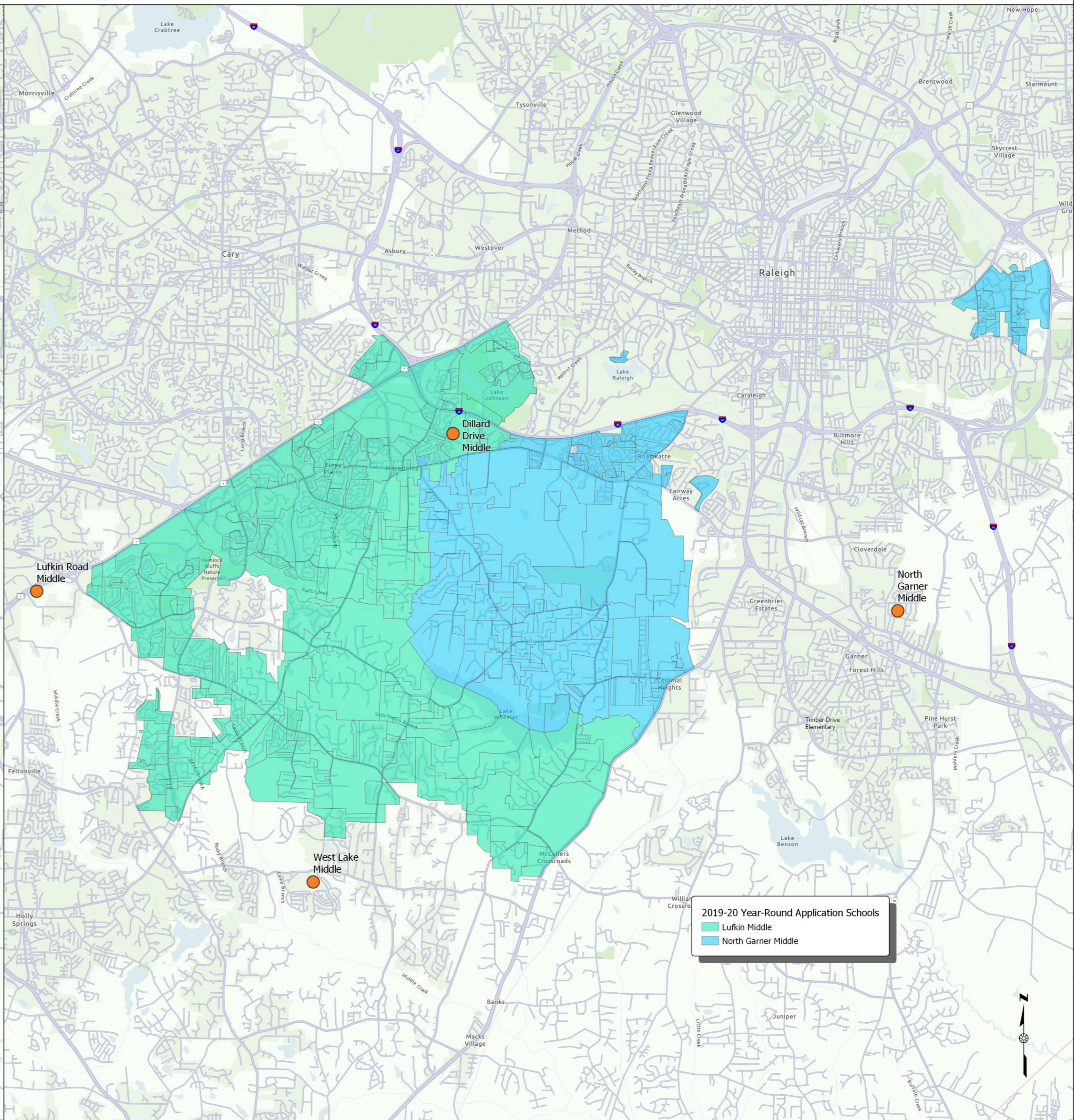
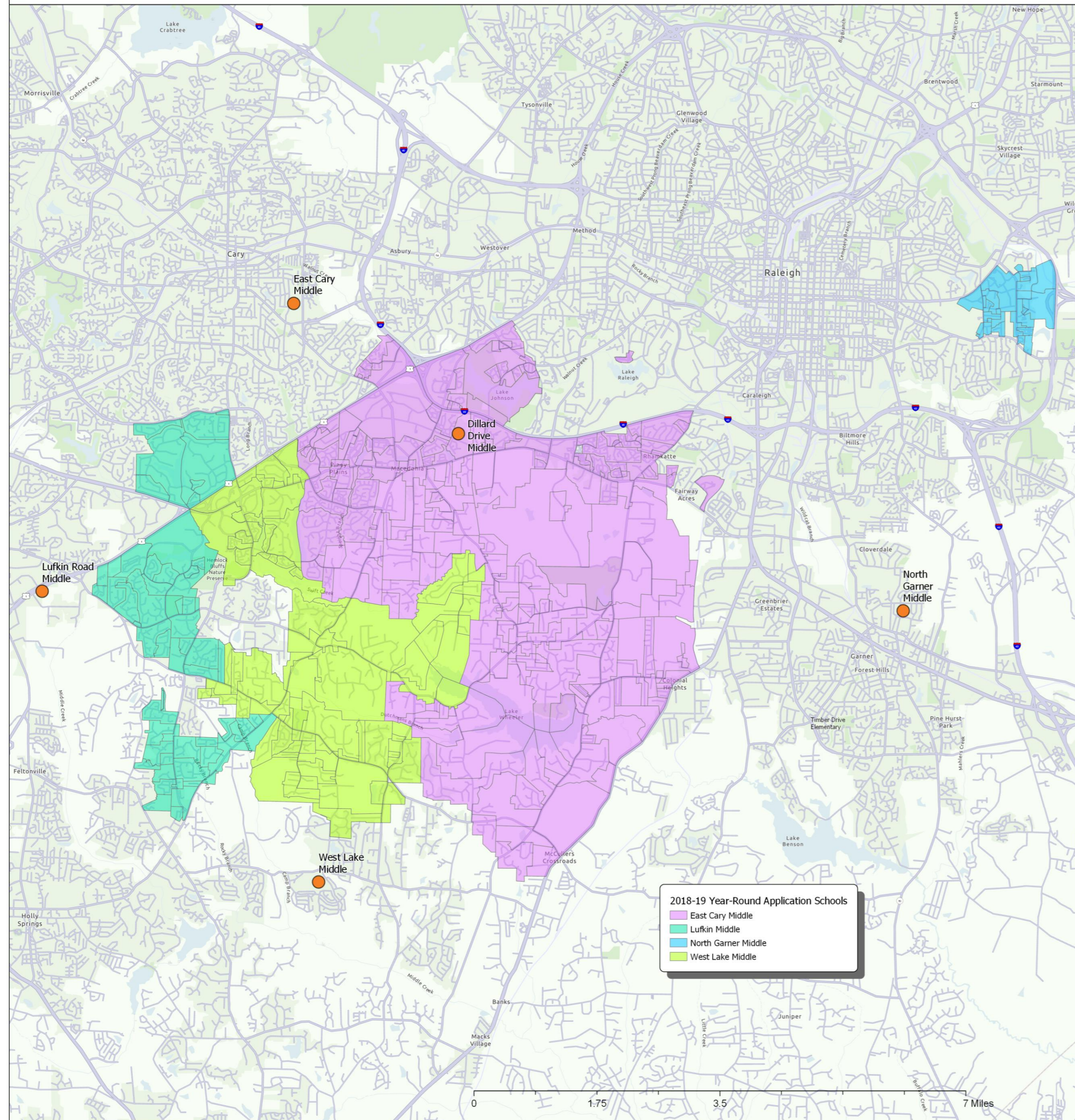
Base School	Application School	Application School	Application School	Application School
Apex MS	Lufkin Road MS	East Cary MS		
Daniels MS	East Cary MS			Pine Hollow MS
Davis Drive MS	Salem MS	East Cary MS		
Dillard Drive MS	Lufkin Road MS	East Cary MS	West Lake MS	North Garner MS*
East Cary MS	Lufkin Road MS	Salem MS*		
Ligon MS	East Cary MS			North Garner MS
^Lufkin Road MS	No changes to existing base			East Cary MS^
Martin MS	East Cary MS			Pine Hollow MS
Mills Park MS	Salem MS	East Cary MS		
Reedy Creek MS	East Cary MS			Lufkin Road MS
West Cary MS	East Cary MS	Lufkin Road MS	Salem MS*	Pine Hollow MS*



Yates Mill Elementary Base Area Year-Round Application Schools 2018-19 vs. 2019-20 Draft 1 Proposal



Dillard Drive Middle Base Area Year-Round Application Schools 2018-19 vs. 2019-20 Draft 1 Proposal



Proposed Calendar Application School Changes - Feedback

- Assigning students to a new school is disruptive for families
- Grandfathering rules should be revised
- Proximity of current school vs assigned school
- Why are we moving some into a school and others out?

Proposed Calendar Application School Changes

- **Options 1:** Revise the Grandfathering rules

- **Option 2:** Keep the recommendation from staff

(See previous slide for parent concerns.)

- **Option 3:** Remove this proposal

(Provides stability for families, but does not address crowding at specific schools or maximize transportation efficiencies.)

Grandfathering rules

Rising 5th and 8th graders, and siblings may return for one year only

- Provides short term stability for families
- Allows quicker impact of improvements (crowding relief and increased utilization)
- New schools are negatively impacted by grandfathering rules

Grandfathering rules for Existing to Existing Schools*

- **Option 1:** Keep the recommendation from staff

(See previous slide for parent concerns.)

- **Option 2:** Allow for rising 4th & 5th and 7th & 8th graders, and siblings for two years instead of one

(Lessens the impact of change, but provides more stability to families.)

- **Option 3:** Allow all students to grandfather

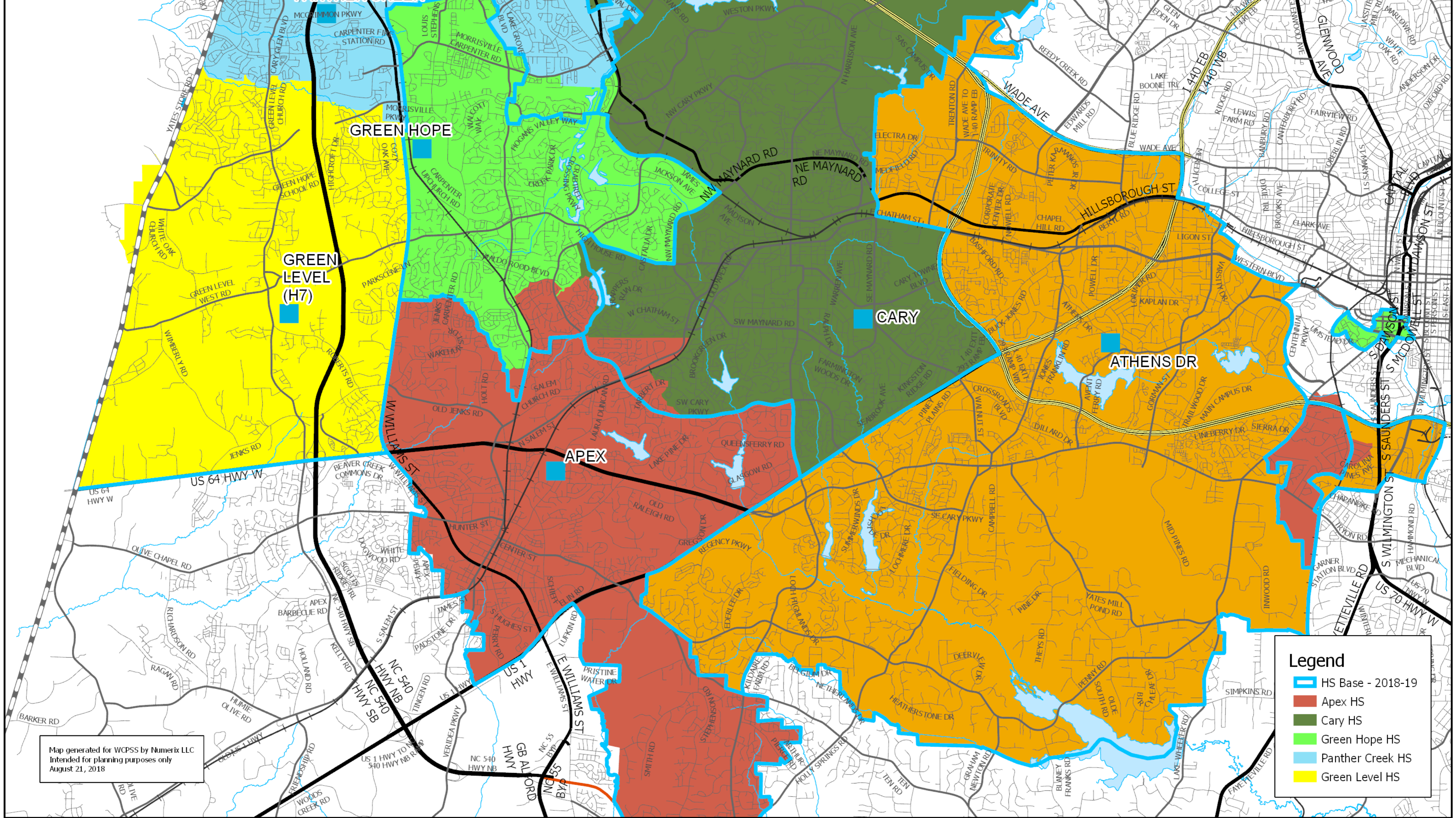
(Provides additional stability for families, but does not address crowding at schools or maximize transportation efficiencies, negative impact on schools in areas where a new school is opening.)

*Capped schools and new schools not included due to crowding concerns

Green Level High

District Goals:

- To provide relief to overcrowded/capped schools in the area

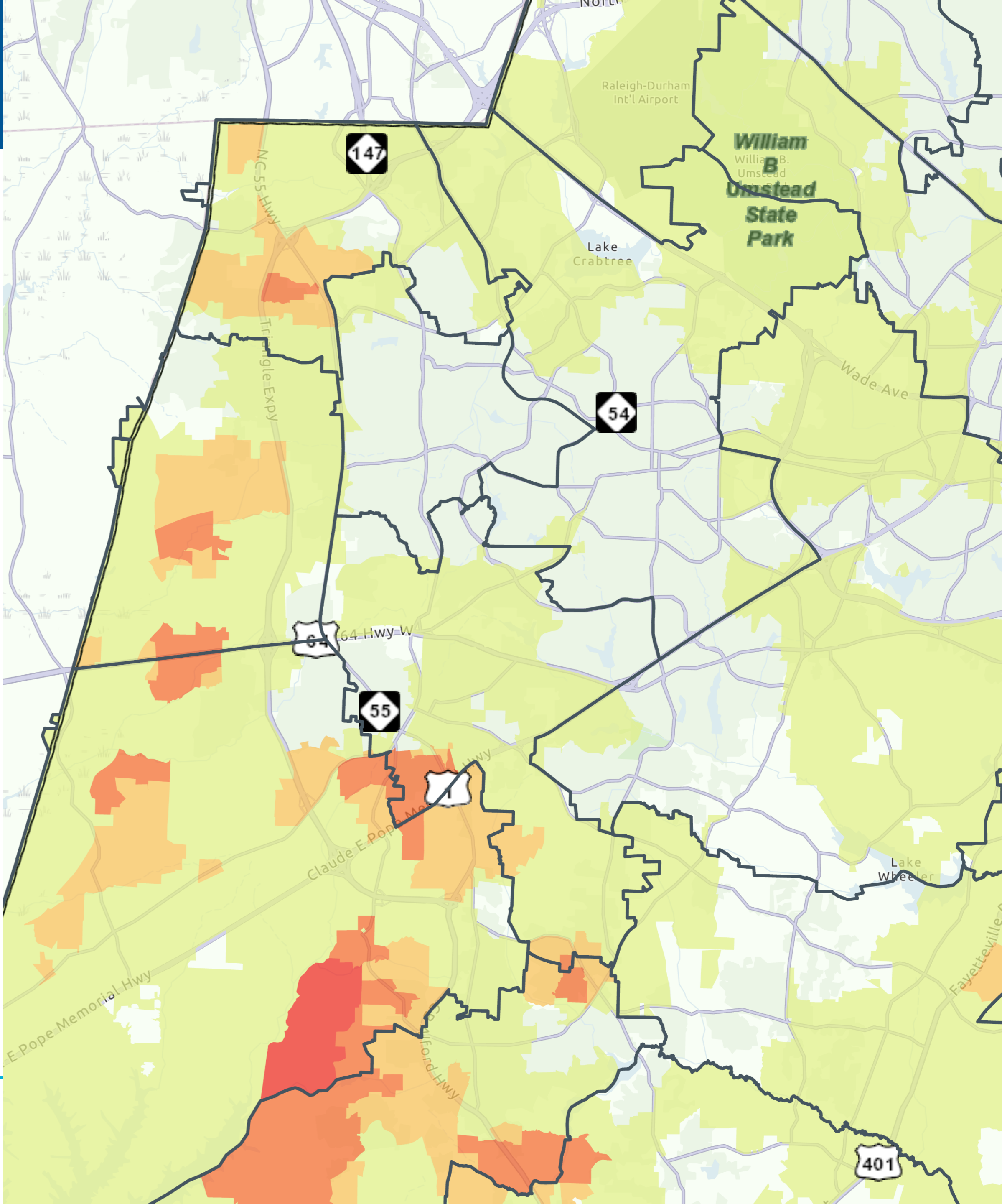
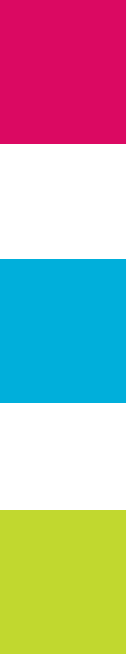


Map generated for WCPSS by Numerix LLC
 Intended for planning purposes only
 August 21, 2018

Legend

- HS Base - 2018-19
- Apex HS
- Cary HS
- Green Hope HS
- Panther Creek HS
- Green Level HS

Green Level High



MacArthur Park Area Feedback

- Want to remain at Green Hope High because they feel it is more proximate
- Feel “targeted” by the Office of Student Assignment over the years
- Proposed greenway to connect to Davis Drive Park, feel should be assigned to Davis Drive Elementary/Davis Drive Middle/Green Hope High
- Believe neighborhood is “aging out” so impact is only short term on Green Hope High
- Green Hope High is not a high growth area

MacArthur Park Area

- Currently proposed to attend Apex High from Green Hope High
- **Laurel Park Elementary/Salem Middle base areas** (no other area with this feeder assigned to Green Hope High)
- **Assignment History**
 - Elementary- 1998-2007 (Davis Drive), 2008-current (Laurel Park)
 - Middle- 1998-2014 (Davis Drive), 2015-current (Salem)
 - High- 1998-current (Green Hope)
- Green Hope High, like Davis Drive campus, does have little new growth, but “aging out” is not supported by the student data.

Feeder alignment issue

- **Option 1:** Staff correct feeder pattern

(Move forward with Green Hope High changes in the recent proposal, but identify other options to support the Highcroft Elementary proposal.)

- **Option 2:** Staff should not consider feeder pattern and continue to work toward reducing crowding at schools

(Move forward with the Highcroft Elementary proposal, but not the Green Hope High related changes.)

- **Option 3:** Move forward with the recommendation from staff

Southeast Raleigh Elementary

- Feedback provided during a meeting with the public addressed changes proposed in Draft 2
- Staff will consider this feedback when developing Draft 3
- Students in the area will already be in the application area for Southeast Raleigh Elementary

Timeline

- **Oct. 30** - Draft 3 presentation
- **Nov. 7** - Public Hearing
- **Nov. 20** - Final Vote